

# LANDBH

## Installation Instructions

Tool to Assist in Unplugging the Discharge Beater on JD Rotor Combines

**The LANFSR10 Feed Accelerator Tool is REQUIRED to Operate the LANDBH Discharge Beater Tool**

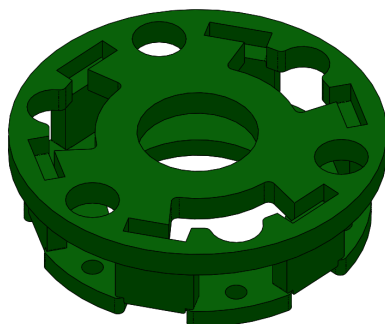
# LANKOTA®

270 West Park Avenue  
Huron, SD 57350  
866-526-5682

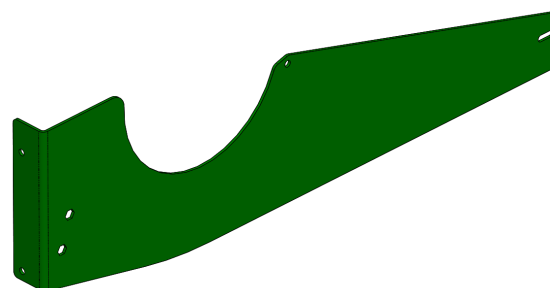
## Numerical Parts List

Part Numbers	Description	Qty
LANDBHV2-W	Discharge Beater Tool	1
LANDBHS1	Shield Update (S-Series)	1
LANY1GC7	M8 x 30mm Bolt	6
LANFQ74G	M10 x 45mm Bolt	6

## Pictorial Parts List



LANDBHV2-W (1)



LANDBHS1 (1)



LANY1GC7 (6)



LANFQ74G (6)

# Kit Installation

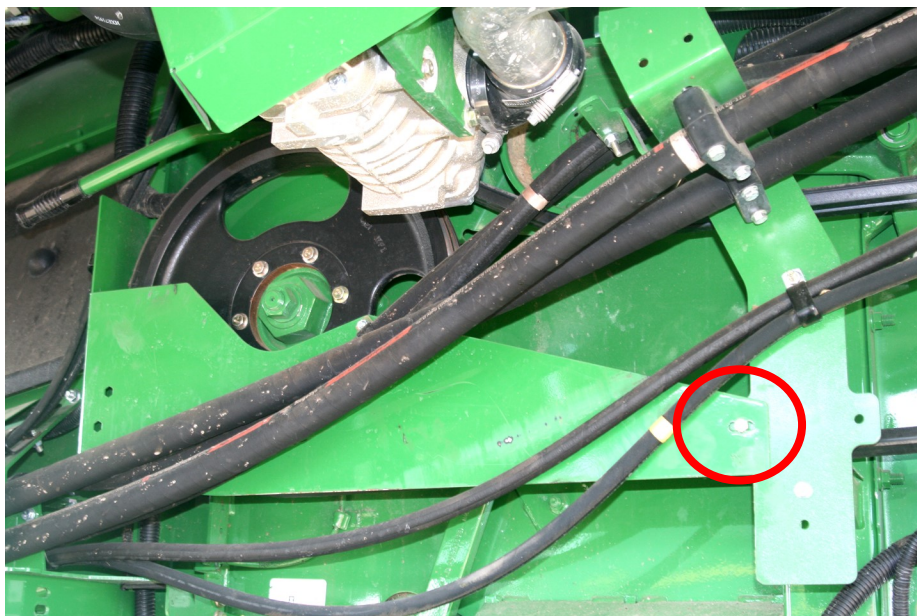
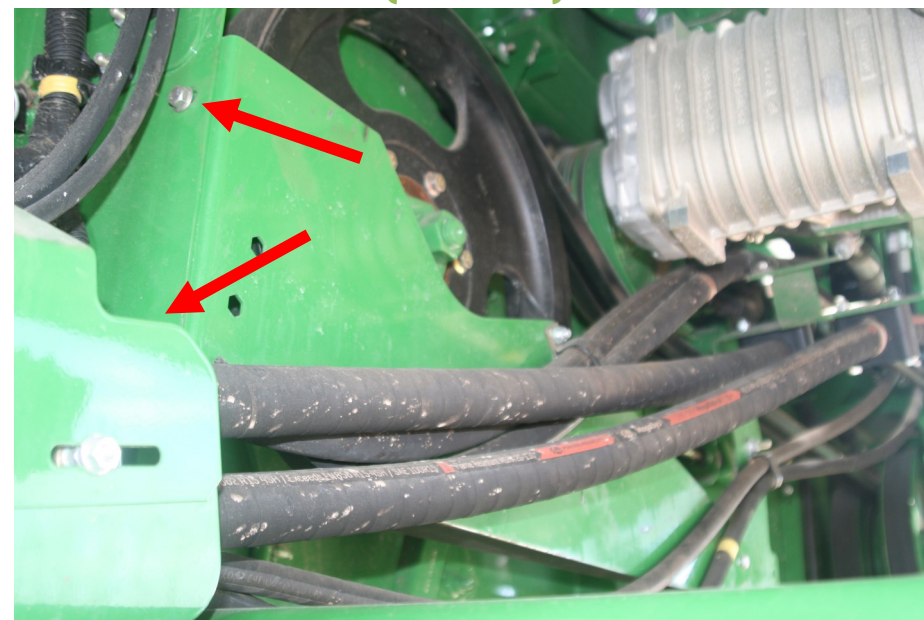


Figure 1

Figure 2



Figure 3



## Refer to Figures 1—3

1. Open both the front and rear panels on the left side of combine. Locate discharge beater pulley (usually black) above rear tire as shown.
2. Remove nut and bolt at the rear of shield (red circle) shown in Figure 2. Retain hardware for reinstallation later in these instructions.
3. Remove nut and bolt holding hose clamp to shield shown in Figure 3. Retain hardware for reinstallation later in these instructions.
4. Remove the two nuts and bolts at the front of shield. Retain hardware for re-installation later in these instructions.



# Kit Installation



Figure 4

Refer to Figure 4

5. **For S-Series Combine Only:** Remove the wear stripping from factory shield and transfer to new shield supplied in this kits (LANDBHS1).

Refer to Figures 5 & 6

6. Loosen jam nut on discharge beater belt tightener. Loosen tightener nut completely.
7. Remove the six factory bolts attaching the discharge pulley to the hub. These bolts will not be used again.

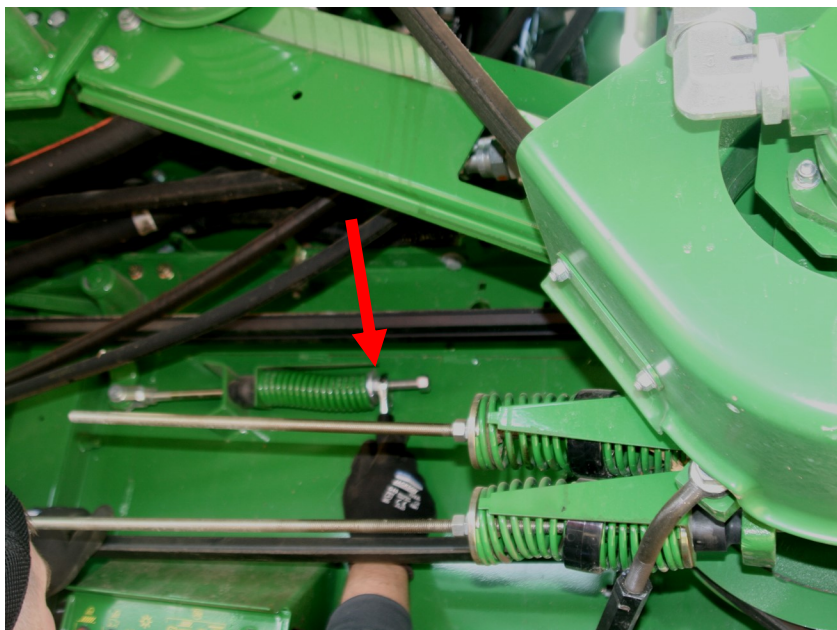


Figure 5

Figure 6



# Kit Installation

## Refer to Figure 7

8. Attach Discharge Beater Tool (LANDBHV2-W) to pulley using supplied M10 x 45mm bolt (LANFQ74G) for S-Series combines or M8 X 30mm bolt (LANY1GC7) for 50, 60 & 70 Series combines. Tighten all hardware.
9. Retighten tightener nut on discharge beater belt tensioner that was loosened in earlier. Tighten jam nut.
10. **For S-Series Combines:** Install new shield (LANDBHS1) using hardware removed earlier in these instructions. Tighten all hardware.
11. **For Pre-S-Series Combines:** Reinstall factory shield removed earlier in these instructions using original hardware.

## Refer to Figure 8

12. If the discharge beater should become plugged, engage the LANDBH with the LANFSR10 assembly to turn the pulley and dislodge the plugged material.

**For further technical assistance,**

**Call Lankota Inc. at:**

**1-866-526-5682**

**Figure 7**



**Figure 8**

