

LANFSR10

Installation Instructions

Tool to Assist in Unplugging the Feed Accelerator on JD Rotor Combines

LANKOTA®

**270 West Park Avenue
Huron, SD 57350
866-526-5682**

Numerical Parts List

Part Numbers	Description	Qty
LANFSR201	Pulley Engaging Section	1
LANFSR202	Handle Insert Section	1
LANFSR203	Extension Section	1
LANFSR251	Handle, Straight	1
LANFSR252	Handle, Bent	1
LANFSR10-011	Lockout Tag for FSR10	1
LAN44302	Zip Ties	1
LANFC507	1/2" x 1.75" Gr 8 Hex Bolt	2
LANFWS55	1/2" SAE Flat Washer	4
RED1F30	1/2" Top Lock Nut	2
LAN18A	3/8" x 1" Carriage Bolt	12
REDNAF3	3/8" Hex Nut	12
REDWL53	3/8" Lock Washer	12

Pictorial Parts List

				
LANFSR201 (1)	LANFSR202 (1)	LANFSR203 (1)	LAN18A (12)	REDWL53 (12)
				
LANFSR251(1)	LANFSR252(1)	LAN44302 (1)	REDNAF3 (12)	LANFSR10-011 (1)
				
LANFC507 (2)	LANFWS55 (4)	RED1F30 (2)		

Kit Assembly

Refer to Figures 1—3

1. The FSR can be assembled in (2) different ways, depending on the depth it needs to reach.
2. Figure 1 shows the most common configuration.
3. Assemble the FSR as required with the 3/8" bolts, lock washers and hex nuts provided.

Note: the extension is usually only needed on S-Series JD combines when operating the LANDBH.

4. Join the two handle halves together with the 1/2" hardware.

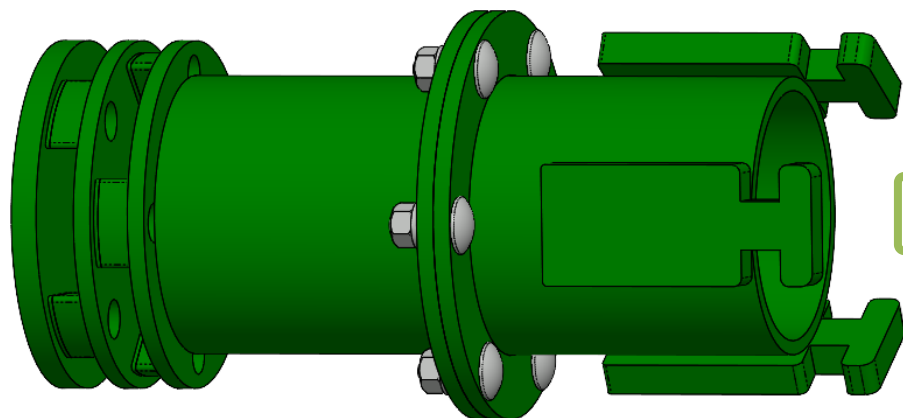


Figure 1

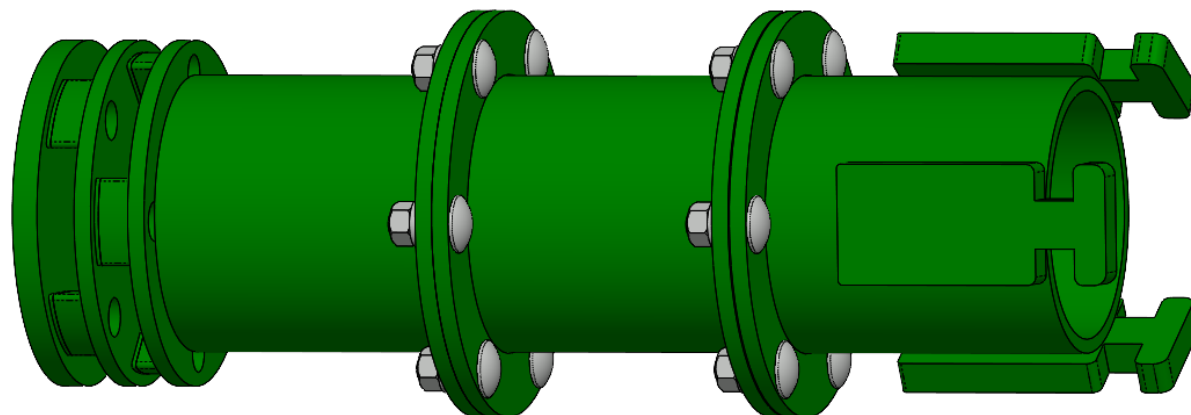


Figure 2

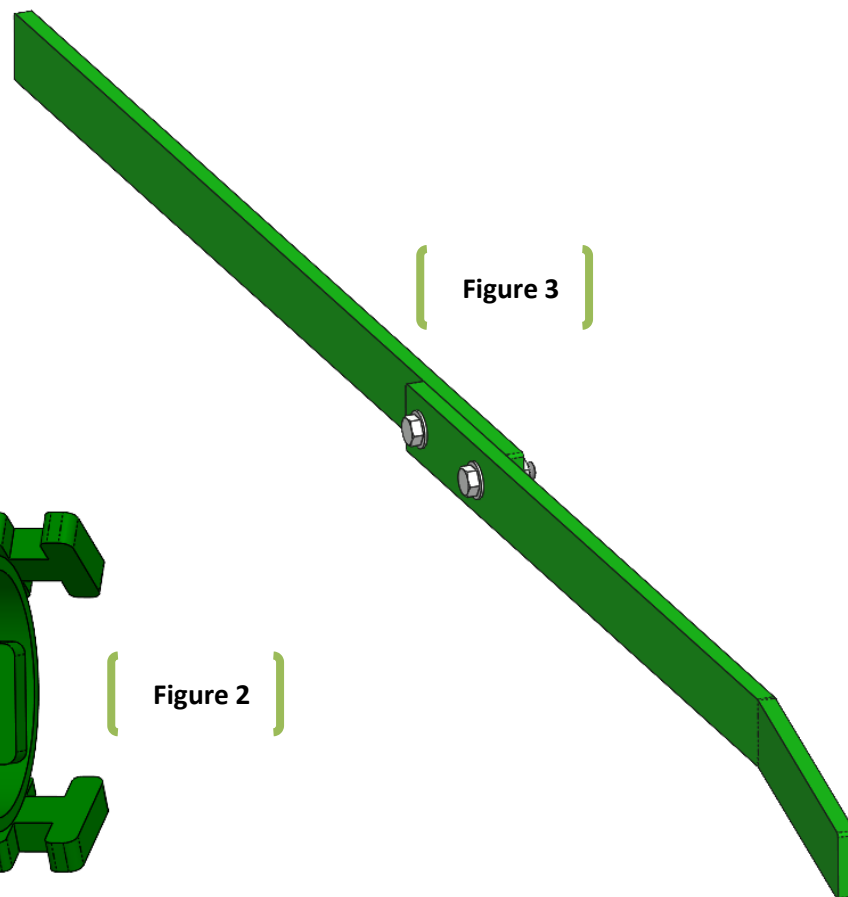


Figure 3

Operation

Refer to Figures 3 & 4

1. Open concave completely. Raise feeder house to full up position. Shut off engine and remove key. Install feeder house cylinder safety stop.
2. Open rock trap door and remove as much material as possible.
3. Return feeder house safety stop to up position, lower feeder house to ground. Shut off engine and remove key.
4. Remove panel on top of feeder house just in front of feed accelerator. Remove as much material as possible.
5. Remove right hand shield covering feed accelerator drive pulley.
6. Install FSR assembly onto pulley. Insert breaker bar (LANSR10-008) into appropriate slots on wrench. Apply force to breaker bar to either reverse or forward slug through feed accelerator.
7. Remove, reinsert and repeat with bar as necessary to remove slug completely.
8. Remove wrench. Reinstall shield. Close rock trap. Return concave to operating setting.

Figure 3



Figure 4

