

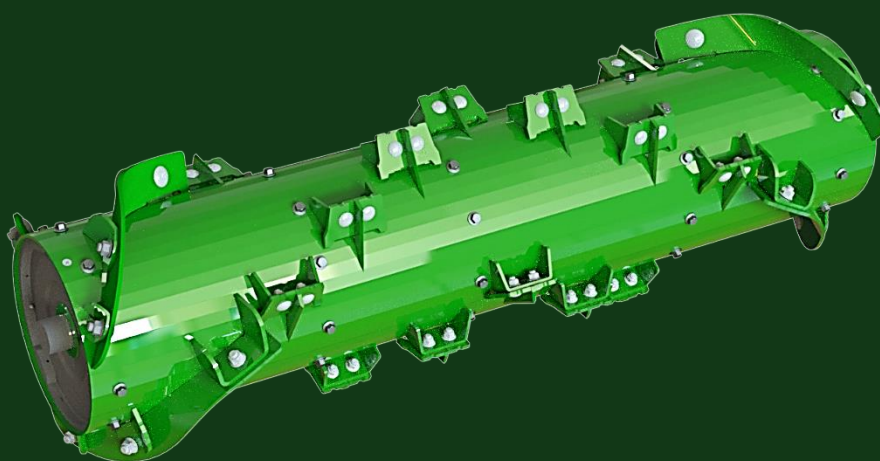


KAMPAG

We evolve with Agriculture

Technical Manual

High performance rear beater



**KAMPAG**

We evolve with Agriculture

Technical Manual

Issue Date: 08/05/2024
Revision Date: 08/05/2024
Revision: 00

Introduction

Congratulations! You have just purchased a KAMPAG product, specially developed to achieve **high productivity, quality, efficiency and durability**.

Please read this manual carefully before using it on your equipment, as it contains essential information to obtain maximum performance and safety, as well as extend the lifetime and reduce maintenance costs of the equipment you purchased.

The **parts catalog** throughout this manual is essential for your guidance in case you need to replace any component.

For any requests, questions or suggestions, please contact us:

KAMPAG

Highway RS 472– Km 6 | Três de Maio/RS. Brazil

Phone : + 55 (55) 3537–4222

E-mail :comercial@kampag.com.br

kampag.official



INDEX

Introduction	2
Index	3
1 – General.....	4
2 – Warranty.....	4
2.1 – Supplier Identification.....	4
2.2 – Warranty effectiveness range period.....	4
2.3 – Warranty scope.....	5
2.4 – Warranty Certificate.....	6
3 – Safety Measures.....	6
4 – Technical Product Information.....	7
4.1 – Product Identification.....	7
4.2 – Dimensions per model.....	8
5 – Assembly Procedure.....	9
6 – Parts Catalog.....	18
Attachments	22



1 – General Information

This manual contains the main information regarding the product High Performance rear beater module for narrow and wide body John Deere combines. All beater modules are factory tested and balanced. For more information, please contact business support.

KAMPAG is not liable for damages caused by:

- Misuse of the product
- Use by unqualified and/or inexperienced personnel
- Incorrect installation (if by customer)
- Unauthorized work or alterations
- Use of non-original parts
- Exceptional events.

2 – Warranty Term

2.1 – Supplier Identification

KAMPAG INDUSTRIAL LTDA, n° 13.552.558/0003-08, headquartered at Highway RS 342, Km 6, Três de Maio, CEP 98910-000. Brazil

2.2 – Warranty effectiveness range period

2.2.1 This warranty term is valid for 12 (twelve) months, from the date of issuance of the product's invoice and the warranty is for the entirety of the beater, even the wear parts.

2.2.2 The warranty is automatically terminated after the expiration of the periods mentioned in this term. In the event that technical work is carried out by third parties on the product without the express consent of KAMPAG, the warranty will be terminated immediately. Any report of failure must be confirmed by qualified KAMPAG employees or KAMPAG's authorized third party.



2.3 – Warranty Scope

2.3.1 The warranty includes all technical interventions necessary for the operation of the product under the conditions provided for in its technical specifications, standards, legislation. For the beaters perfect operation is understood when, after service, the equipment is operational as required by the contract, and the other functionalities are identical to those of the factory.

2.3.2 Excluded from this Warranty Term are defects or damages resulting from:

- I. Failures caused by any changes in the product;
- II. Exchange of parts for non-KAMPAG original ones;
- III. Any defect pointed out by the purchaser or dealer arising from repair, replacement of parts and/or components or other service performed by a third party, without authorization from the manufacturer (KAMPAG);
- IV. When the defect is due to an accident;
- V. The warranty on complete parts and/or components is extinguished with the warranty period of the product;
- VI. The replacement of complete components will only be carried out in the event that the defect cannot be remedied and replaced by parts that compose it.
- VII. Eventual delays in the execution of the services do not entitle the owner to compensation or extension of the warranty period;
- VIII. Changes in models, parts, components and prices may be made by the manufacturer without prior notice

2.3.3 KAMPAG does not assume the obligation to comply with a product that has already been installed, to implement updates later introduced in latest products of the same model;



2.3.4 KAMPAG reserves the right to evolve and improve the products of its manufacture at any time, independent of Prior communication.

2.4 - Warranty Certificate

2.4.1 The Warranty Certificate, see attachment to this manual.

Important: If the product proves to be defective during the warranty period, contact the manufacturer or authorized dealer exclusively.

3- Safety Measures

3.1 The precautions below refer to the installation issues of the KAMPAG product and for that, they must be considered in preventive/corrective maintenance plans of the harvester to which it will be installed;

- During the installation of the product, have a helper to lock and unlock the spindle swivel when necessary. In the event that it is not possible to have a helper, the locking of the system **MUST** be done in the same way in order to avoid accidents. (View in Assembly Instructions);
- Test the equipment after installation. If you identify any vibration or imbalance coming from the product, check if the wear plates are firmly bolted;
- Always entrust the machine to trained operators;
- Periodically test the system for balance;
- Periodically check that the bolts and nuts that secure the wear plates and covers are secure.

4 - Technical Product Information

4.1 – Product Identification

When requesting spare parts or technical assistance, please provide the serial number of the beater, marked in the central part of the covers, as shown below.



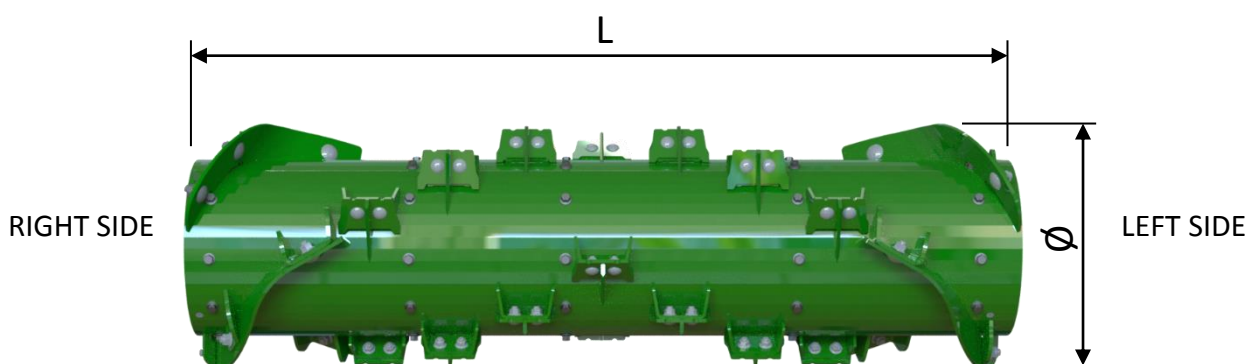


4.2 – Dimensions per model

The following table shows the combine models (harvesters) to which each Kampag module applies and is compatible, being Narrow Body or Wide Body.

KAMPAG beater	Diameter (Ø) X Lenght (L)	Combine models
KPF000078 (narrow)	Ø420 X 1094mm	/S540/S550/STS9560/STS9570/ /STS 9470/
KPF000072 (wide)	Ø420 X 1370mm	/S650/S660/S670/S680/S690/ /S760/S770/S780/S790/ /STS 9650/STS 9750/ /STS 9660/STS 9760/STS 9860/ /STS 9670/STS 9770/STS 9870/

Note: When the terms "right side" and "left side" are used, they are referred to in relation to the position of the operator in the direction of travel of the harvester.



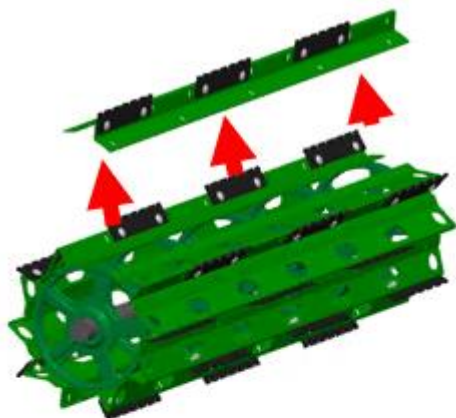


5 – Assembly Procedure

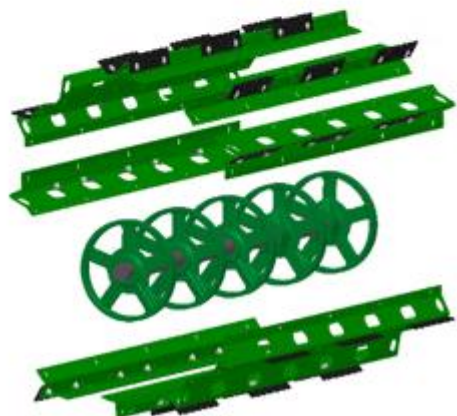


STEP 1: FULL CLEARANCE / OPENING OF THE CHOPPER SYSTEM

Chopper should be moved away at its maximum stroke, for better access to the rear components



**STEP 2: COMPLETE REMOVAL OF
THE ORIGINAL CROSSBARS**



**STEP 3: CLEAN THE DIRT
IMPREGNATED ON THE FLANGES
AND CYLINDER**



STEP 4: EVALUATE ALL FLANGE/HUB THREADS

If the threads are ok, move on to the next page.

For the threads with a problem, do the rework procedure below



REWORK 1: REDRILL WITH DRILL
DIAMETER 10.5mm



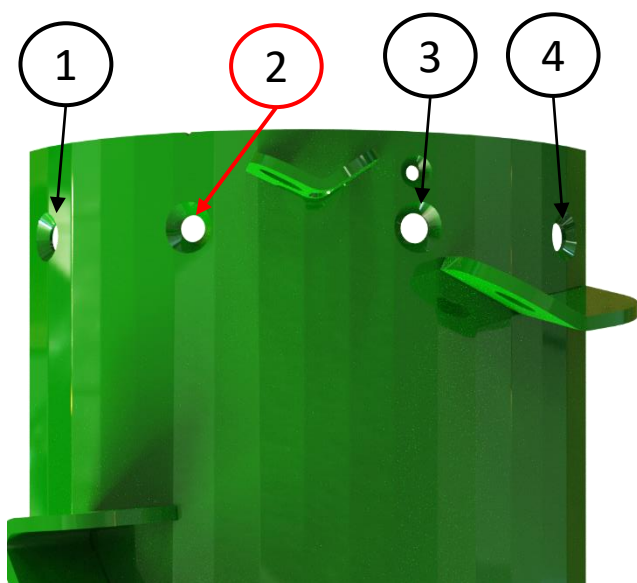
REWORK 2: THREADING WITH
M12X1.5 TAP



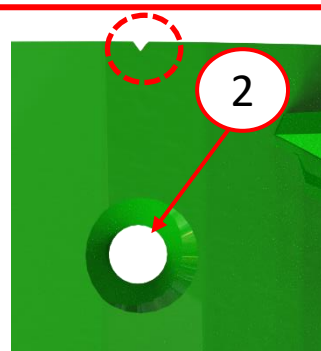
REWORK 3: WITH A SIMPLE OR
SPECIAL TOOL, INSERT THE
HELICOIL WITH THREAD-LOCKING
GLUE



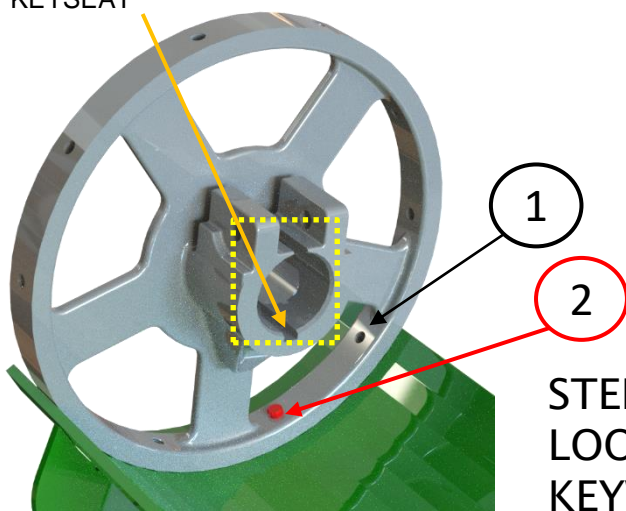
STEP 5: SELECT THE COVER THAT CONTAINS 04 HOLES



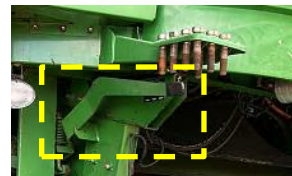
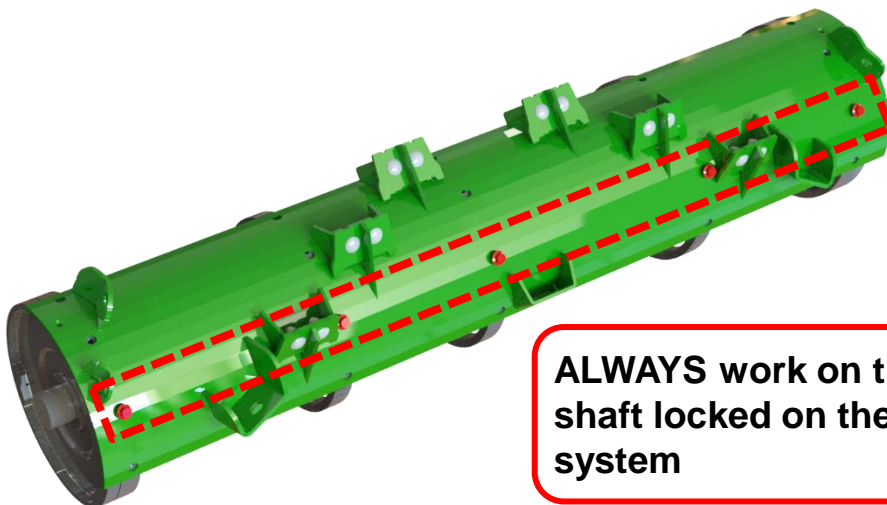
The entire line indicated in orifice 2, also indicated on the cover plate as per the detail, in the length has a smaller hole, which will be the first one to be screwed



KEYSEAT

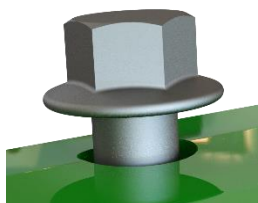


STEP 5: POSITION THE COVER BY LOOKING AT THE SIDE OF THE KEYWAY AND THE SMALLER HOLE



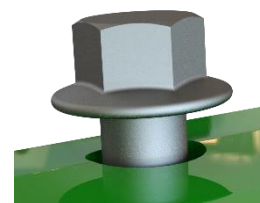
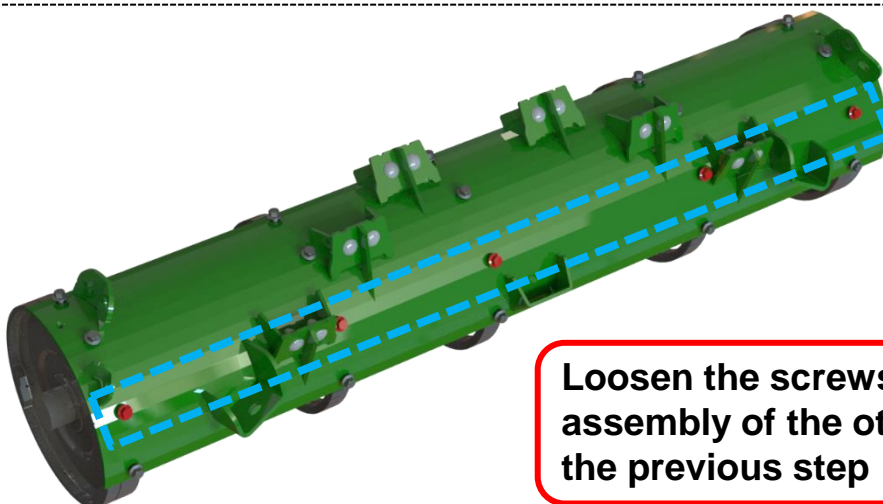
ALWAYS work on the assembly with the shaft locked on the machine's safety system

STEP 6: TIGHTEN THE COUNTERSUNK SCREW THREAD OF THE SMALLER HOLE (2)



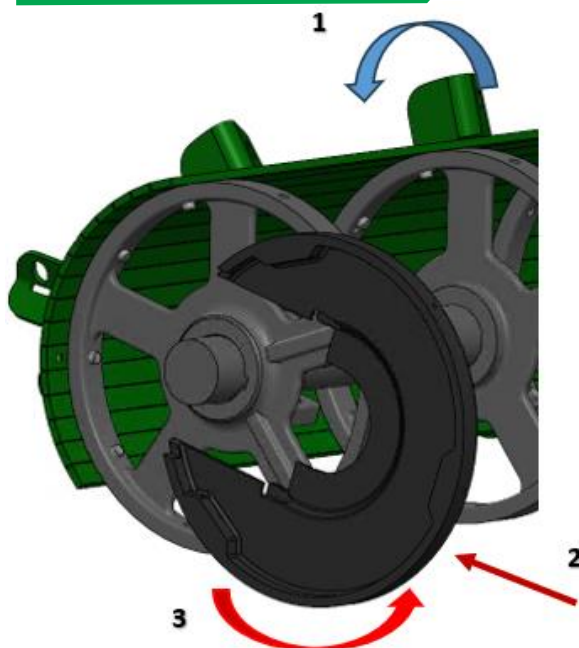
Final tightening will be done only after you have all the covers assembled

STEP 7: ASSEMBLE THE REST OF THE SCREWS OF THE COVER WITHOUT TIGHTENING, LEAVING A SMALL GAP



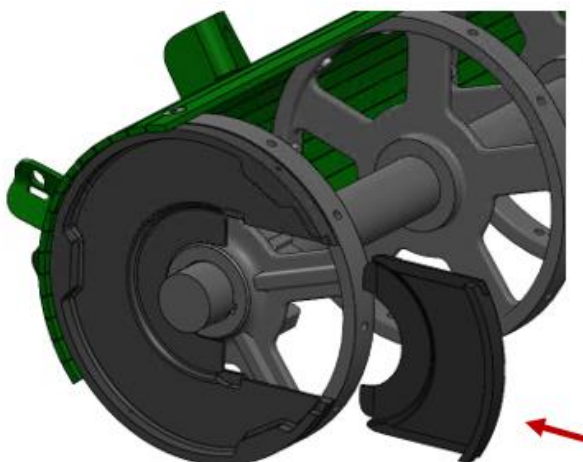
Loosen the screws to facilitate the assembly of the other two covers as per the previous step

STEP 8: LOOSEN THE FIRST SCREWS (SMALLER HOLES)



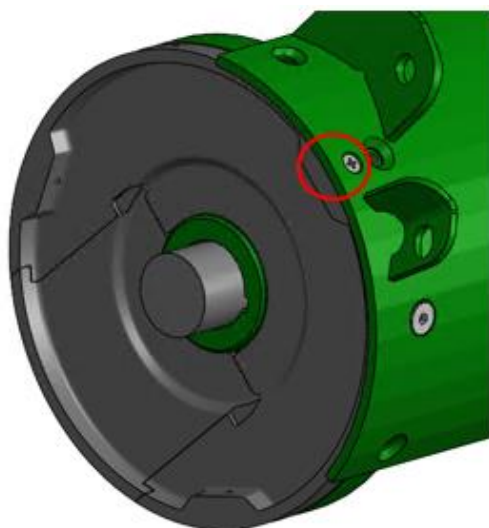
STEP 10: ASSEMBLING THE SEALING COVERS – PART 1

First, unlock the spindle, rotate the module to the inside of the machine (1), LOCK the spindle again, insert the larger part of the side seal cover (2) and rotate (3) so that the drawer is forward

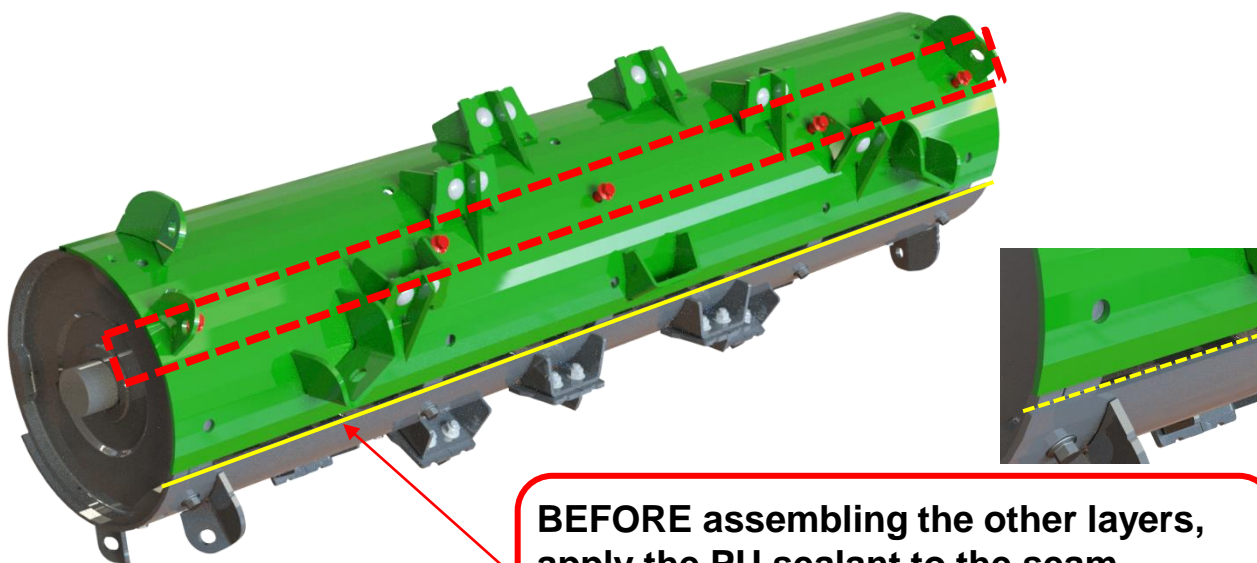


STEP 11: ASSEMBLING SEALING COVERS – PART 2

Finish assembling the seal with the smaller part. Check the fit and repeat the procedure on the other side

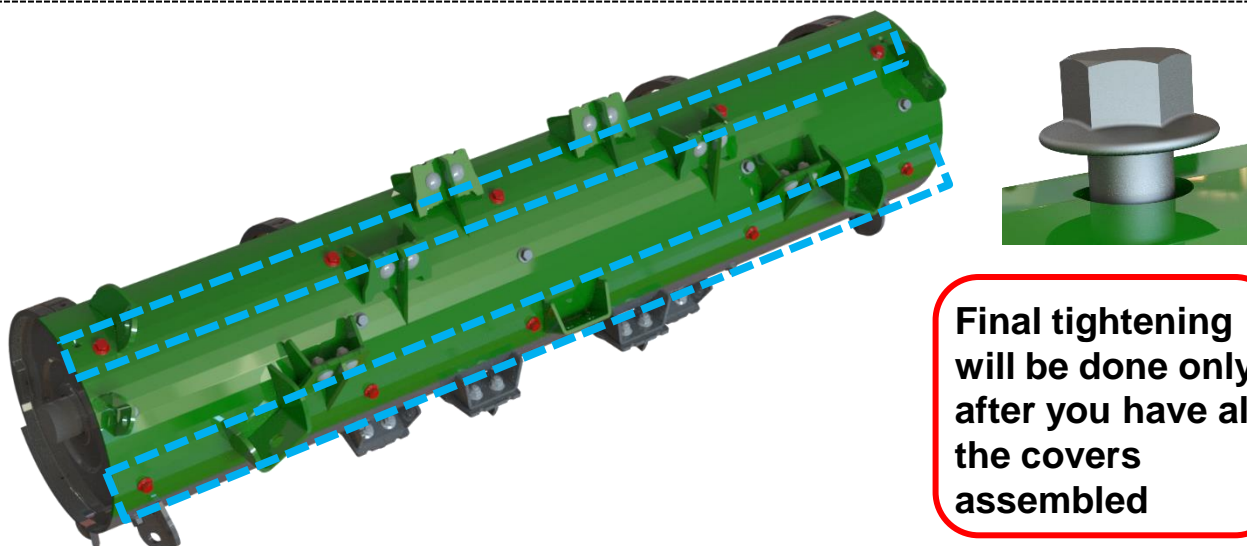


STEP 12: ATTACH THE SIDE SEAL WITH CROSS-SLOTTED SCREW-IN SCREWDRIVER ON BOTH SIDES ON THE FIRST COVER



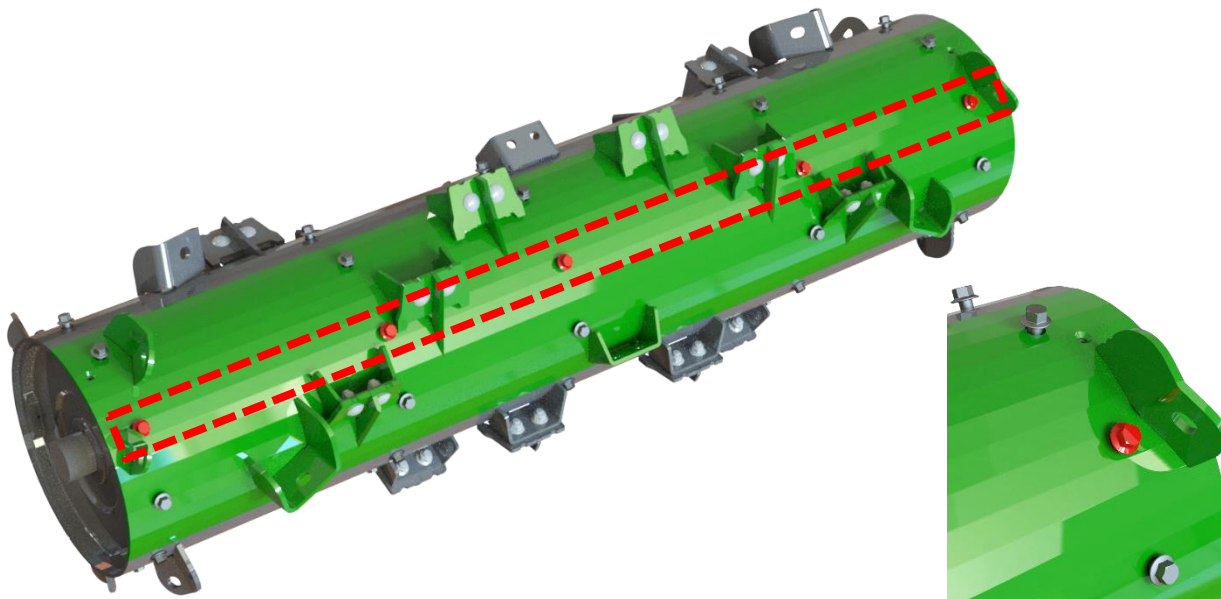
BEFORE assembling the other layers, apply the PU sealant to the seam between sheets, **NEVER** apply after assembly

STEP 13: ASSEMBLE THE SECOND COVER, APPLYING THE PU SEALANT TO THE ALREADY ATTACHED COVER AND FIXING WITH LIGHT TIGHTNESS ON THE CENTRAL SCREWS

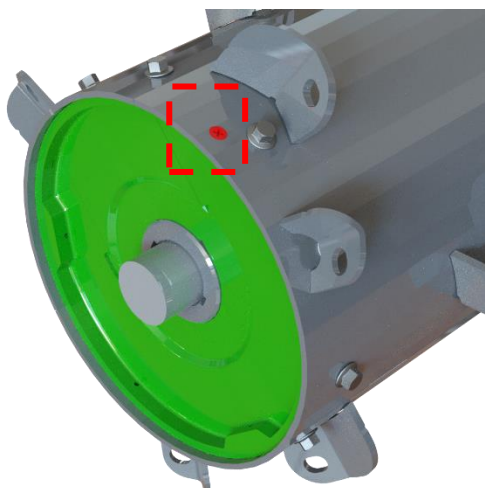


Final tightening will be done only after you have all the covers assembled

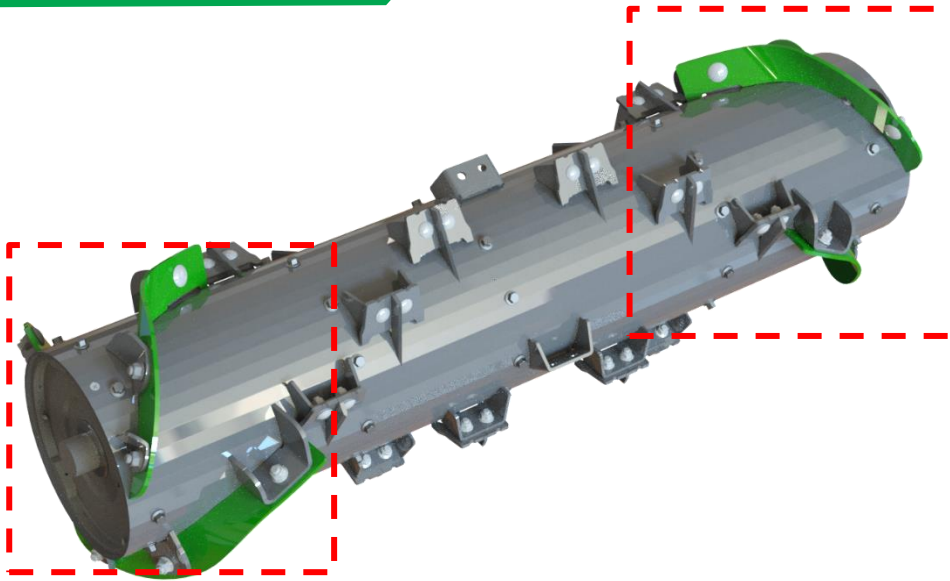
STEP 14: ASSEMBLE THE REST OF THE SCREWS OF THE COVER WITHOUT TIGHTENING, LEAVING A SMALL GAP, THEN LOOSEN THE SCREWS FROM THE PREVIOUS STEP



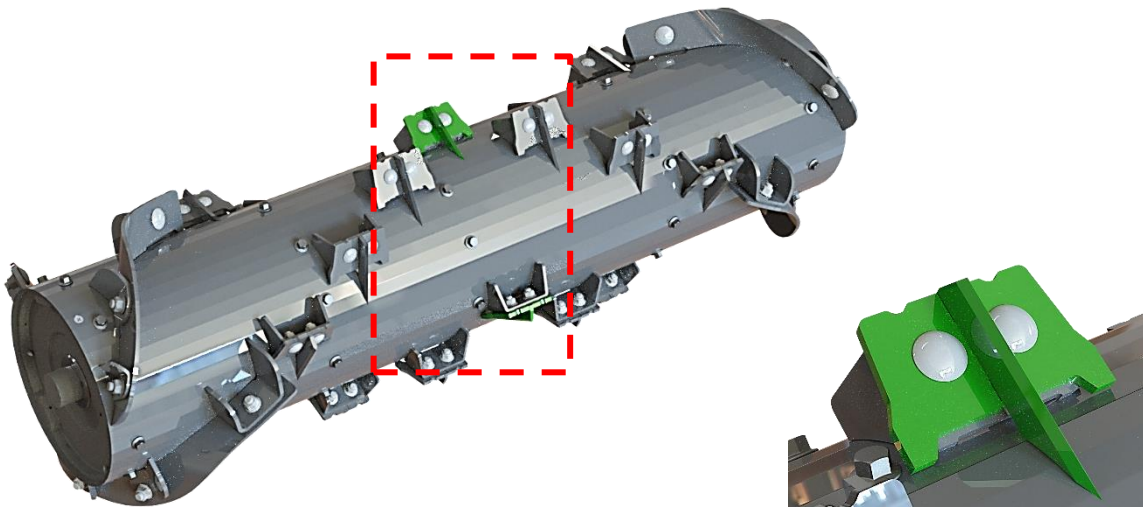
STEP 15: REPEAT STEPS 13 AND 14 ON THE LAST COVER. WITH ALL THE SCREWS PRE-POSITIONED, START THE FINAL TIGHTENING THROUGH THE COVER WITH 04 HOLES APPLYING 72 N.m TOR, ALWAYS STARTING WITH THE CENTRAL HOLES OF EACH COVER



STEP 16: MOUNT THE REST OF THE CROSS-SLOTTED SCREWS TO THE SIDE SEAL



STEP 17: MOUNT THE SMOOTH WEAR PLATES AT THE ENDS USING THE BOLTS AND NUTS APPLYING 120 N.m TORQUE

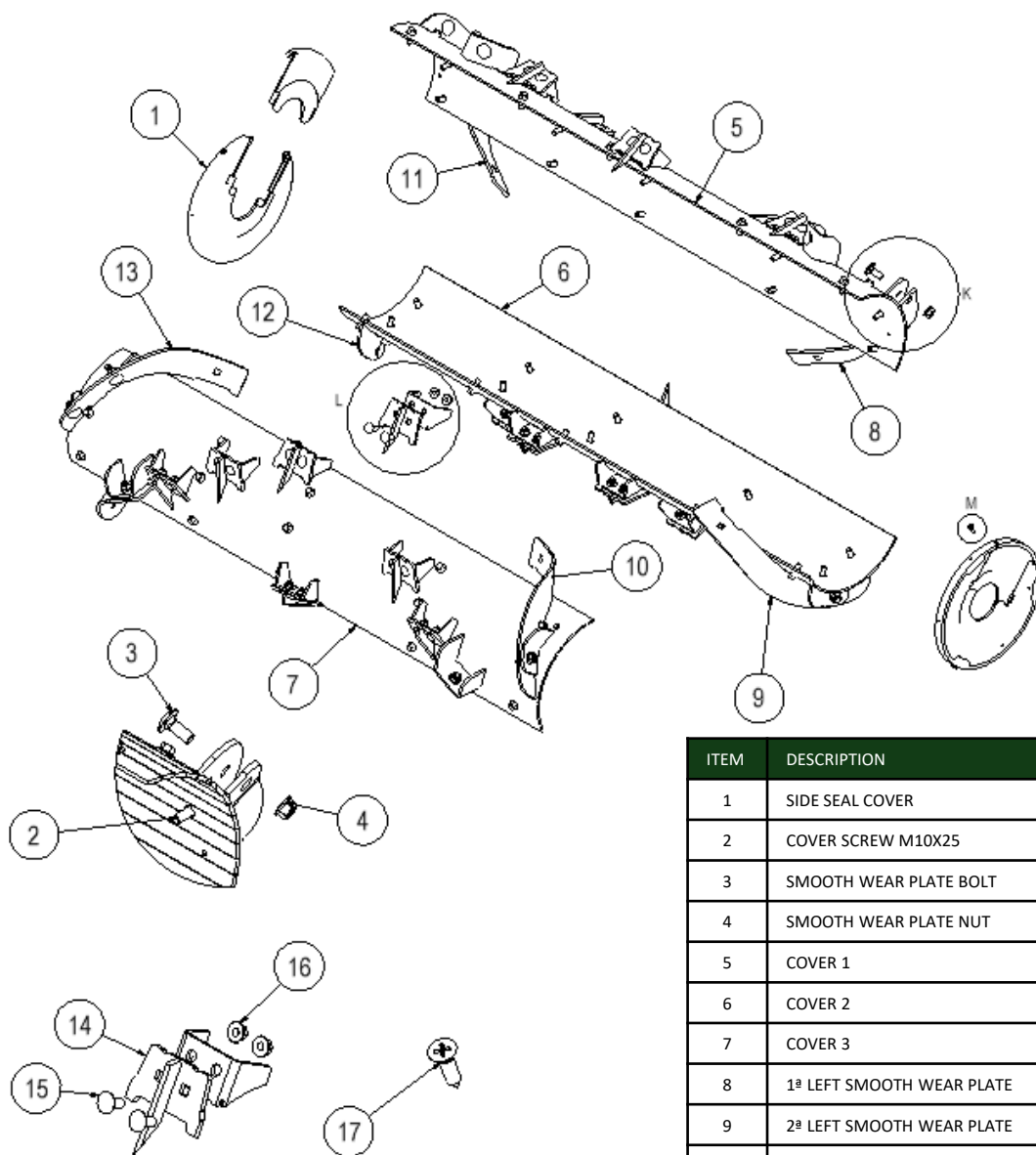


STEP 18: MOUNT THE WEAR PLATES IN THE CENTRAL PART OF THE BEATER USING THE BOLTS AND NUTS APPLYING 120 N.m TORQUE

STEP 19: CHECK ALL BOLTS TO AVOID LOOSE COMPONENTS

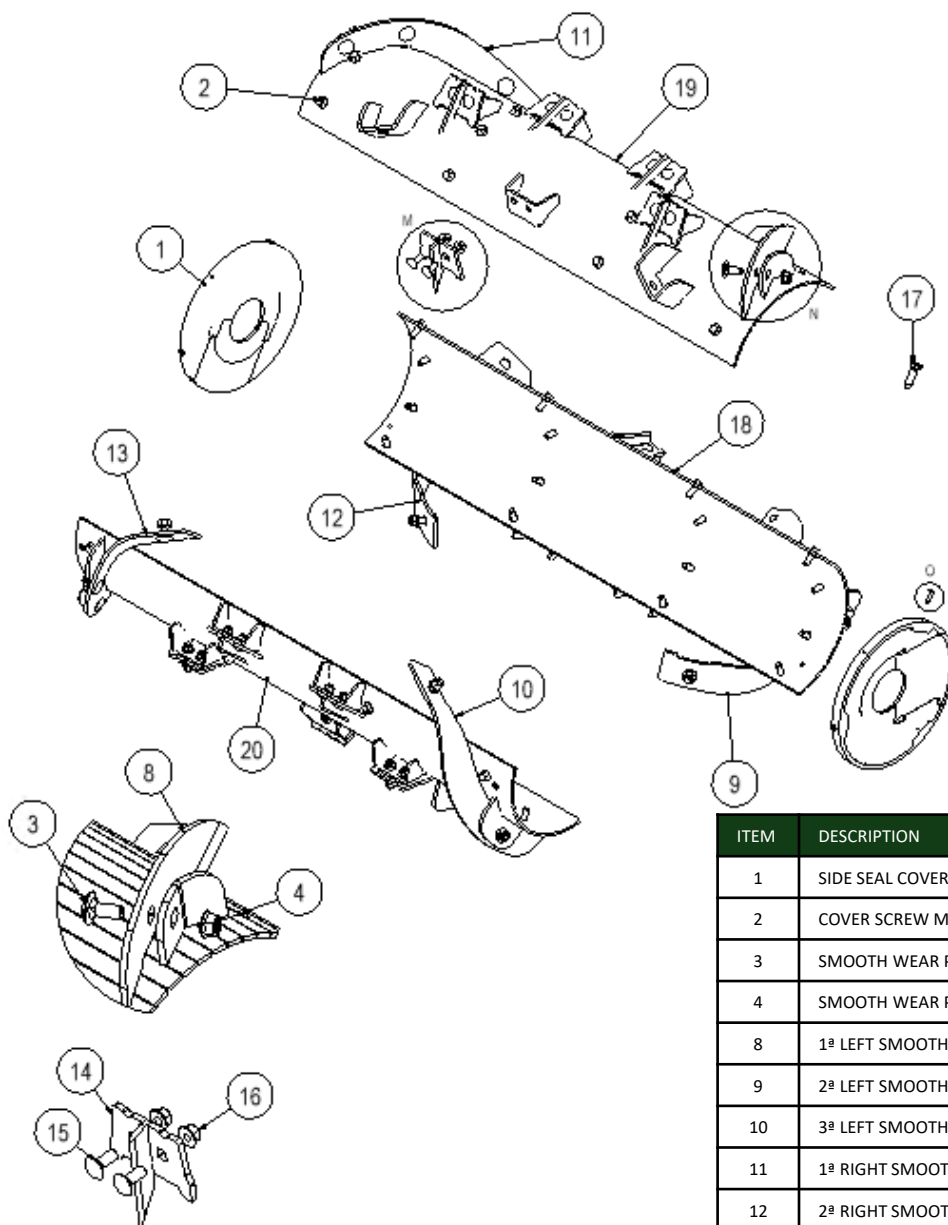
6 – PARTS CATALOG

High Performance rear beater module wide body (SKU.: KPF000072)



ITEM	DESCRIPTION	QUANTITY
1	SIDE SEAL COVER	2
2	COVER SCREW M10X25	50
3	SMOOTH WEAR PLATE BOLT	15
4	SMOOTH WEAR PLATE NUT	15
5	COVER 1	1
6	COVER 2	1
7	COVER 3	1
8	1ª LEFT SMOOTH WEAR PLATE	1
9	2ª LEFT SMOOTH WEAR PLATE	1
10	3ª LEFT SMOOTH WEAR PLATE	1
11	1ª RIGHT SMOOTH WEAR PLATE	1
12	2ª RIGHT SMOOTH WEAR PLATE	1
13	3ª RIGHT SMOOTH WEAR PLATE	1
14	CENTRAL WEAR PLATE	21
15	CENTRAL WEAR PLATE BOLT	42
16	CENTRAL WEAR PLATE NUT	42
17	SEAL SCREW	6

Módulo Tripartido Traseiro JD6 TTR (Ref.:KPF000078)



ITEM	DESCRIPTION	QUANTITY
1	SIDE SEAL COVER	2
2	COVER SCREW M10X25	40
3	SMOOTH WEAR PLATE BOLT	15
4	SMOOTH WEAR PLATE NUT	15
8	1ª LEFT SMOOTH WEAR PLATE	1
9	2ª LEFT SMOOTH WEAR PLATE	1
10	3ª LEFT SMOOTH WEAR PLATE	1
11	1ª RIGHT SMOOTH WEAR PLATE	1
12	2ª RIGHT SMOOTH WEAR PLATE	1
13	3ª RIGHT SMOOTH WEAR PLATE	1
14	CENTRAL WEAR PLATE	15
15	CENTRAL WEAR PLATE BOLT	30
16	CENTRAL WEAR PLATE NUT	30
17	SEAL SCREW	6
18	COVER 1	1
19	COVER 2	1
20	COVER 3	1

IMPORTANT: the wear plate replacement kits need to be changed according to the kits below, to maintain the balance of the beater, without compromising operation on the machine.

SKU: KPF000094 – TOTAL Replacement kit for wear plates Wide Body

ITEM	DESCRIPTION	QUANTITY
8	1ª LEFT SMOOTH WEAR PLATE	1
9	2ª LEFT SMOOTH WEAR PLATE	1
10	3ª LEFT SMOOTH WEAR PLATE	1
11	1ª RIGHT SMOOTH WEAR PLATE	1
12	2ª RIGHT SMOOTH WEAR PLATE	1
13	3ª RIGHT SMOOTH WEAR PLATE	1
3	SMOOTH WEAR PLATE BOLT	15
4	SMOOTH WEAR PLATE NUT	15
14	CENTRAL WEAR PLATE	21
15	CENTRAL WEAR PLATE BOLT	42
16	CENTRAL WEAR PLATE NUT	42

SKU: KPF000095 – Replacement Kit for central wear plates Wide Body

ITEM	DESCRIPTION	QUANTITY
14	CENTRAL WEAR PLATE	21
15	CENTRAL WEAR PLATE BOLT	42
16	CENTRAL WEAR PLATE NUT	42



SKU: KPF000096 – Replacement Kit for a central wear plate Wide & Narrow Body

ITEM	DESCRIPTION	QUANTITY
14	CENTRAL WEAR PLATE	1
15	CENTRAL WEAR PLATE BOLT	2
16	CENTRAL WEAR PLATE NUT	2

SKU: KPF000097 – TOTAL Replacement kit for wear plates Narrow Body

ITEM	DESCRIPTION	QUANTITY
8	1ª LEFT SMOOTH WEAR PLATE	1
9	2ª LEFT SMOOTH WEAR PLATE	1
10	3ª LEFT SMOOTH WEAR PLATE	1
11	1ª RIGHT SMOOTH WEAR PLATE	1
12	2ª RIGHT SMOOTH WEAR PLATE	1
13	3ª RIGHT SMOOTH WEAR PLATE	1
3	SMOOTH WEAR PLATE BOLT	15
4	SMOOTH WEAR PLATE NUT	15
14	CENTRAL WEAR PLATE	15
15	CENTRAL WEAR PLATE BOLT	30
16	CENTRAL WEAR PLATE NUT	30

SKU: KPF000098 – Replacement Kit for central wear plates Narrow Body

ITEM	DESCRIPTION	QUANTITY
14	CENTRAL WEAR PLATE	15
15	CENTRAL WEAR PLATE BOLT	30
16	CENTRAL WEAR PLATE NUT	30

SKU: KPF000099 – Replacement Kit for smooth wear plates **Wide & Narrow Body**

ITEM	DESCRIPTION	QUANTITY
8	1ª LEFT SMOOTH WEAR PLATE	1
9	2ª LEFT SMOOTH WEAR PLATE	1
10	3ª LEFT SMOOTH WEAR PLATE	1
11	1ª RIGHT SMOOTH WEAR PLATE	1
12	2ª RIGHT SMOOTH WEAR PLATE	1
13	3ª RIGHT SMOOTH WEAR PLATE	1
3	SMOOTH WEAR PLATE BOLT	15
4	SMOOTH WEAR PLATE NUT	15

SKU: KPF000100 – Replacement Kit for right side smooth wear plates **Wide & Narrow Body**

ITEM	DESCRIPTION	QUANTITY
11	1ª RIGHT SMOOTH WEAR PLATE	1
12	2ª RIGHT SMOOTH WEAR PLATE	1
13	3ª RIGHT SMOOTH WEAR PLATE	1
3	SMOOTH WEAR PLATE BOLT	15
4	SMOOTH WEAR PLATE NUT	15

SKU: KPF000101 – Replacement Kit for left side smooth wear plates **Wide & Narrow Body**

ITEM	DESCRIPTION	QUANTITY
8	1ª LEFT SMOOTH WEAR PLATE	1
9	2ª LEFT SMOOTH WEAR PLATE	1
10	3ª LEFT SMOOTH WEAR PLATE	1
3	SMOOTH WEAR PLATE BOLT	15
4	SMOOTH WEAR PLATE NUT	15



WARRANTY CERTIFICATE

Purchase date:/...../.....

Invoice #:

Retailer Data

Name:

Address:

Signature:

Customer data

Name:

Address:

Phone:

Product data

Model SKU:

Manufacturing date:

Serial #:

KAMPAG, registered with CNPJ No. 13.552.588/0003-08, assures the customer identified above a 12-month warranty on the product described above, counted from the issuance of the Invoice. This warranty only covers malfunctions of the parts and components of the products under normal use in accordance with the accompanying manual provided by the manufacturer. This warranty will be automatically cancelled if the products are repaired by unauthorized persons, suffer damage due to accidents, falls and overload above the specified, or any unforeseeable occurrence resulting from misuse of the products by the user.

.....
CUSTOMER SIGNATURE

.....
SELLER SIGNATURE